

PEACH® DYNASEP™

PEACH DEPTH STYLE, GAS FILTER-SEPARATOR CARTRIDGES

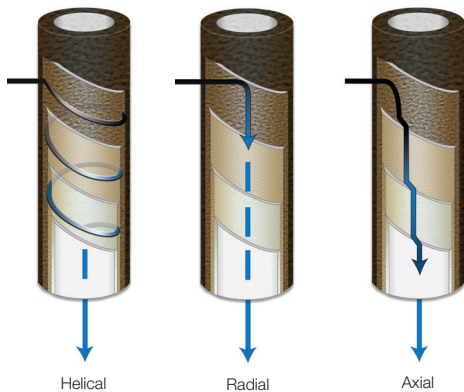
Series KPCHG

for use in King Tool filter-separator vessels or competitor vessels of similar design



The PEACH DynaSep, Series KPCHG, cartridge is a great choice for removing deformable and shear-sensitive contaminants found in natural gas streams. This cartridge can be used in King Tool filter-separator vessels, as well as competitor vessels of similar design. The synthetic construction allows for the use of improved media technologies and is

an excellent upgrade option to traditional fiberglass cartridges. The Series KPCHG is made using the patented PEACH process which provides increased flow, high efficiency and effective removal of contaminants. This equates to increased operational life, fewer change-outs, reduced maintenance and reduced costs.

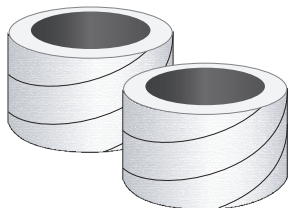


THREE FLOW PATHS FOR UNPARALLELED FILTRATION

PEACH® is a patented manufacturing process for making a unique depth style filter cartridge. Through thermal bonding, spiral layers of engineered filtration media are applied to conform and overlap each previous layer forming a conical helix pattern. This filter structure results in a gradient density pattern that provides an extraordinary flow path in radial, axial and helical directions. This tortuous flow path yields high contaminant loading, structural strength, maximum efficiency, and an overall outstanding filtration performance.

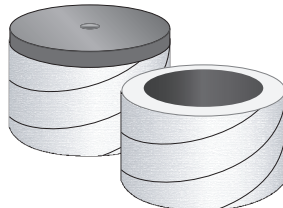
Removes Contaminants such as:

Asphaltenes, Coal Fines, Dirt, Iron Sulfides, Molecular Sieve Dust, Pipe Scale, Salts, Sand, Wear Metals



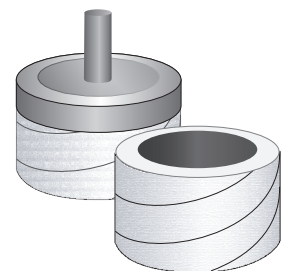
KPCHG

Double Open End with
Integral PEACH Caps



KPCHG-CE

Top Closed with Bolt Hole
Bottom Open w/Integral PEACH Cap



KPCHG-EXT

Top Closed w/ Pin Extension
Bottom Open w/ Integral PEACH Cap



ENGINEERING YOUR SUCCESS.

MATERIALS

MEDIA	PEACH Polyester
CORE	Tin Plated Steel
END CAPS	Integral End Caps (No Gasket Seal Required) Carbon Steel (Optional)
SEAL	None, Buna-N, Viton®

NOMINAL DIMENSIONS

SIZE	O.D.	I.D.	LENGTH
36	3.3" / 84mm	2.25" / 57mm	36" / 914mm
72	3.3" / 84mm	2.25" / 57mm	72" / 1829mm
336	4.4" / 112mm	3.3" / 84mm	36.25" / 921mm
372	4.4" / 112mm	3.3" / 84mm	72.25" / 1835mm

* Dimension may vary depending on end cap style

PERFORMANCE

MICRON RATING: 0.3, 0.5, 1, 5, 10

EFFICIENCY: 99.98%

0.3µm ratings are recommended when iron sulfide removal is required

OPERATING DATA

FLOW DIRECTION: Outside-to-Inside

MAX. TEMP: Polyester 240°F / 116°C

MAX. DIFFERENTIAL PRESSURE: 35 psid / 2.4 bar

RECOMMENDED CHANGE-OUT

DIFFERENTIAL PRESSURE: 12–15 psid / 0.8–1.0 bar

• Max. Pressure may be limited by vessel manufacturer's design



**SCAN QR CODE FOR ADDITIONAL
PRODUCT INFORMATION INCLUDING
AVAILABLE PART NUMBERS**

For technical questions contact ipf.technical@support.parker.com or call 940-325-2575
To order, contact a support representative at ipf.support@support.parker.com or call 940-325-2575
Purchasing details: Request a quote at ipf.quotes@support.parker.com
Parker IPF Standard Terms & Conditions apply www.parker.com/IPF-Aftermarket-TOS

- Consult factory for available options.
- Viton® is a registered trademarks of E. I. du Pont de Numours and Company.

© 2023 Parker Hannifin Corporation
DS-PEACHDYNASEP-KPCHG-231114



Parker Hannifin Corporation
Industrial Process Filtration Division
Phone 940-325-2575 | Toll Free 1-800-877-7326
www.parker.com/ipf